

LED in Action: Using LODES Data for Outcome Tracking and Community Engagement in the Promise Zones Initiative

June 24, 2015

Drew Zachary, Margeaux Akazawa,
& Calvin Johnson
U.S. Department of Housing & Urban
Development

Disclaimer

Any opinions and conclusions expressed in this presentation are those of the authors and do not necessarily represent the views of the U.S. Department of Housing and Urban Development or any partners in the Promise Zones Initiative.

Promise Zones is...



A White House
Initiative

Part of the
President's
Ladders of
Opportunity
Agenda

A Place- Based
Initiative

Promise Zones Goals



Create Jobs



Increase Economic Opportunity



Improve Educational Opportunities



Reduce Serious or Violent Crime



Leverage Private Capital

Promise Zone Benefits



Federal staff on the ground to help connect with resources



5 AmeriCorps VISTA members



Preferred access and technical assistance to more than 35 federal programs

Promise Zones Designees

Number of Designees	Total 20 Urban, rural, and tribal Promise Zones Round 1 (2014): 5 Round 2 (2015): 8 Round 3 (2016): 7
Designation Duration	10 Years
Qualifying Criteria	Contiguous geography encompassing one or more census tract (exception: Tribal)
	Population: Urban: 10,000 – 200,000 Rural/Tribal: Less than 200,000
	Overall poverty rate or Extremely Low Income Rate Urban: At or above 33% Rural/Tribal: At or above 20%; PZ must contain one census tract at or above 30%
	Local leadership (Mayor) must demonstrate support

Promise Zones Designees



Using LODES and OnTheMap for Promise Zones

Outcome Indicators Tracking

- Tracking and conducting internal analysis of changes over time in key indicators
 - *Employment by industry*
 - *Job flow*


Technical Assistance

- Create and share settings files
- Provide maps and excel data reports
- OnTheMap tutorial

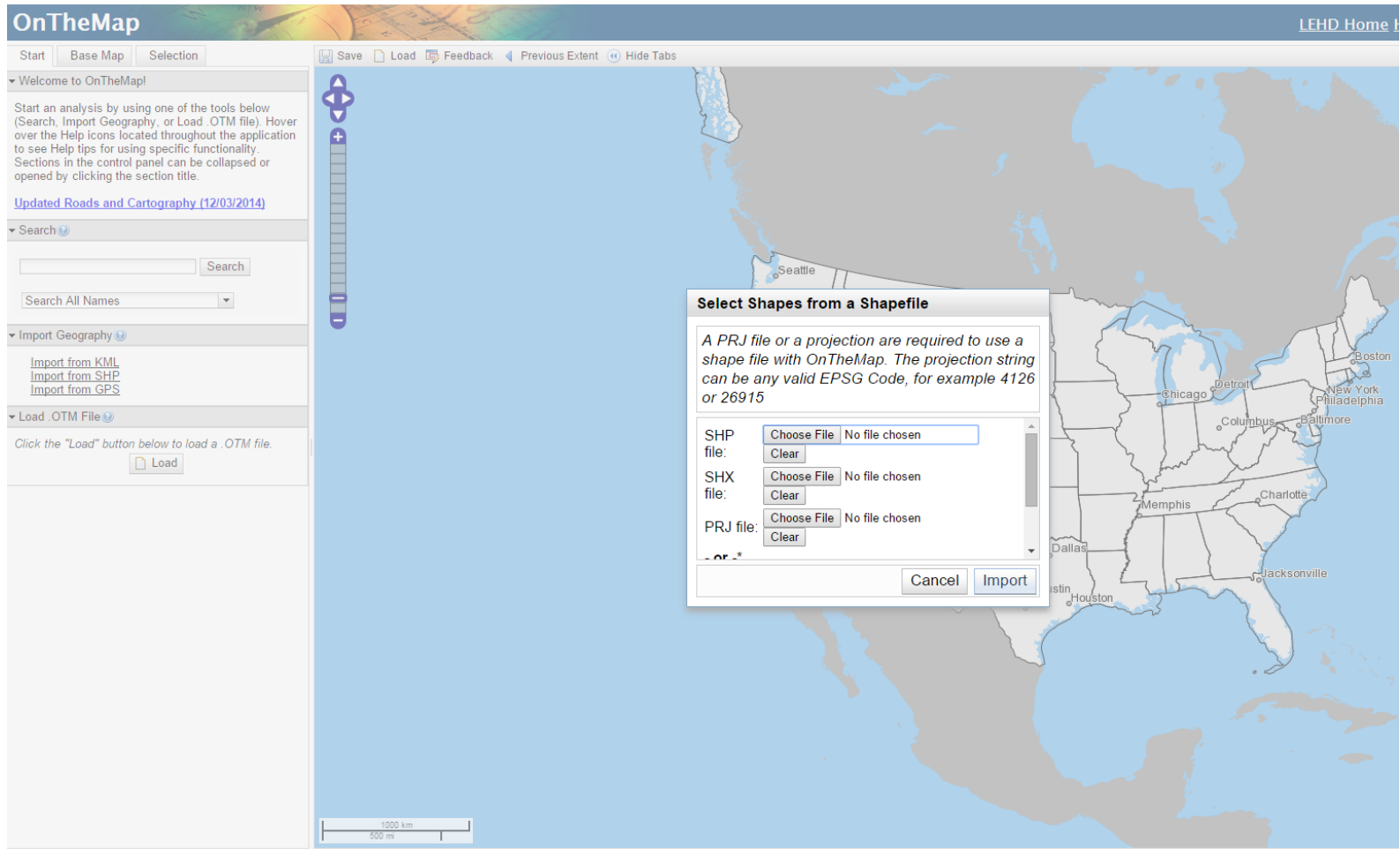
Community Engagement

- OnTheMap visualization assists with local implementation strategies
- Local expertise informs mapping results

Engaging Stakeholders: Technical Assistance Approach

- 
- Shapefiles of the Promise Zone boundaries (saved as .OTM files)
 - Work Area Profile, Home Area Profile, inflow/outflow, distance/direction, and destination reports for each PZ
 - Detailed excel report (will add comparison sites and years when available)
 - Demo of OnTheMap to Promise Zones local staff and agency partners

Uploading a Shapefile



<http://onthemap.ces.census.gov/>

Accessing the Map Settings

OnTheMap

Start Base Map Selection **Results**

Work Area Profile Analysis
enter your own subtitle

▼ Display Settings

Characteristic Filter Total
Year 2011

▼ Map Controls

Color Key
Thermal Overlay ☒
Point Overlay ☒
Selection Outline ☒
[Identify](#) [Zoom to Selection](#)
[Clear Overlays](#) [Animate Overlays](#)

▼ Report/Map Outputs

[Detailed Report](#)
[Export Geography](#)
[Print Chart/Map](#)

▼ Legends

- 5 - 3,414 Jobs/Sq.Mile
- 3,415 - 13,642 Jobs/Sq.Mile
- 13,643 - 30,688 Jobs/Sq.Mile
- 30,689 - 54,553 Jobs/Sq.Mile
- 54,554 - 85,237 Jobs/Sq.Mile
- 1 - 37 Jobs
- 38 - 577 Jobs
- 578 - 2,919 Jobs
- 2,920 - 9,223 Jobs
- 9,224 - 22,518 Jobs
- Analysis Selection

► Analysis Settings

[Change Settings](#)

LEHD Home

Save Load Feedback Previous Extent Hide Tabs Hide Chart/Report

Analysis Settings

Area Profile Analysis in 2011 by All Jobs
Home/Work Area
Determines whether the selection area is analyzed on where workers live ("Home") or where workers are employed ("Work").

☐ Home
☒ Work

Analysis Type
Determines the type of results that will be generated for the selected area.

☒ Area Profile
Labor Market Segment:
All Workers

☐ Area Comparison
Areas to Compare:
Places (Cities, CDPs, etc.)
Labor Market Segment:
All Workers

☐ Distance/Direction
Destination Type:
ZIP Codes (ZCTA)

☐ Inflow/Outflow
Note: Home/Work choice does not affect results

Year
Determines the year(s) of data that will be processed in the analysis.

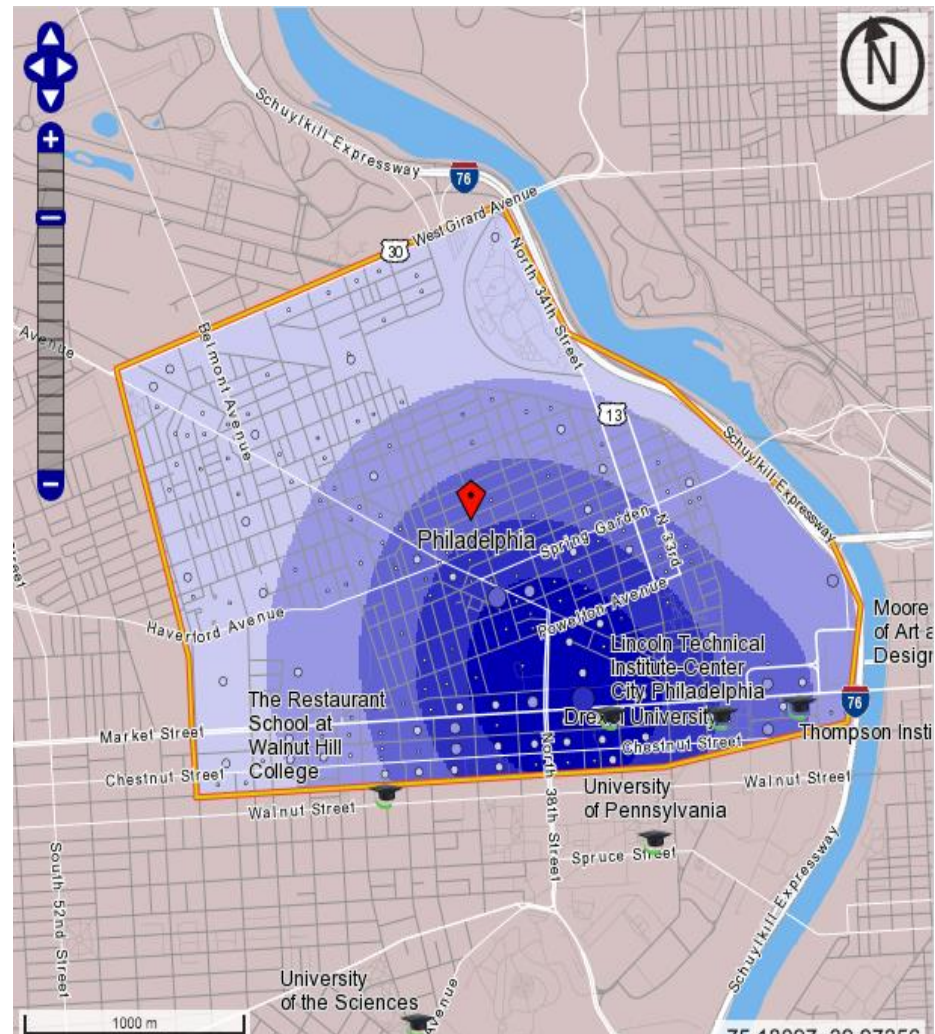
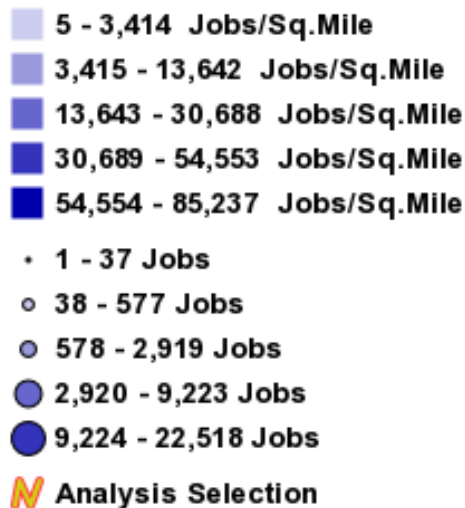
☒ 2011
☐ 2010
☐ 2009
☐ 2008
☐ 2007
☐ 2006
☐ 2005
☐ 2004
☐ 2003
☐ 2002

Job Type
Determines the scope of jobs that will be processed in the analysis.

☒ All Jobs
☐ Primary Jobs
☐ All Private Jobs
☐ Private Primary Jobs

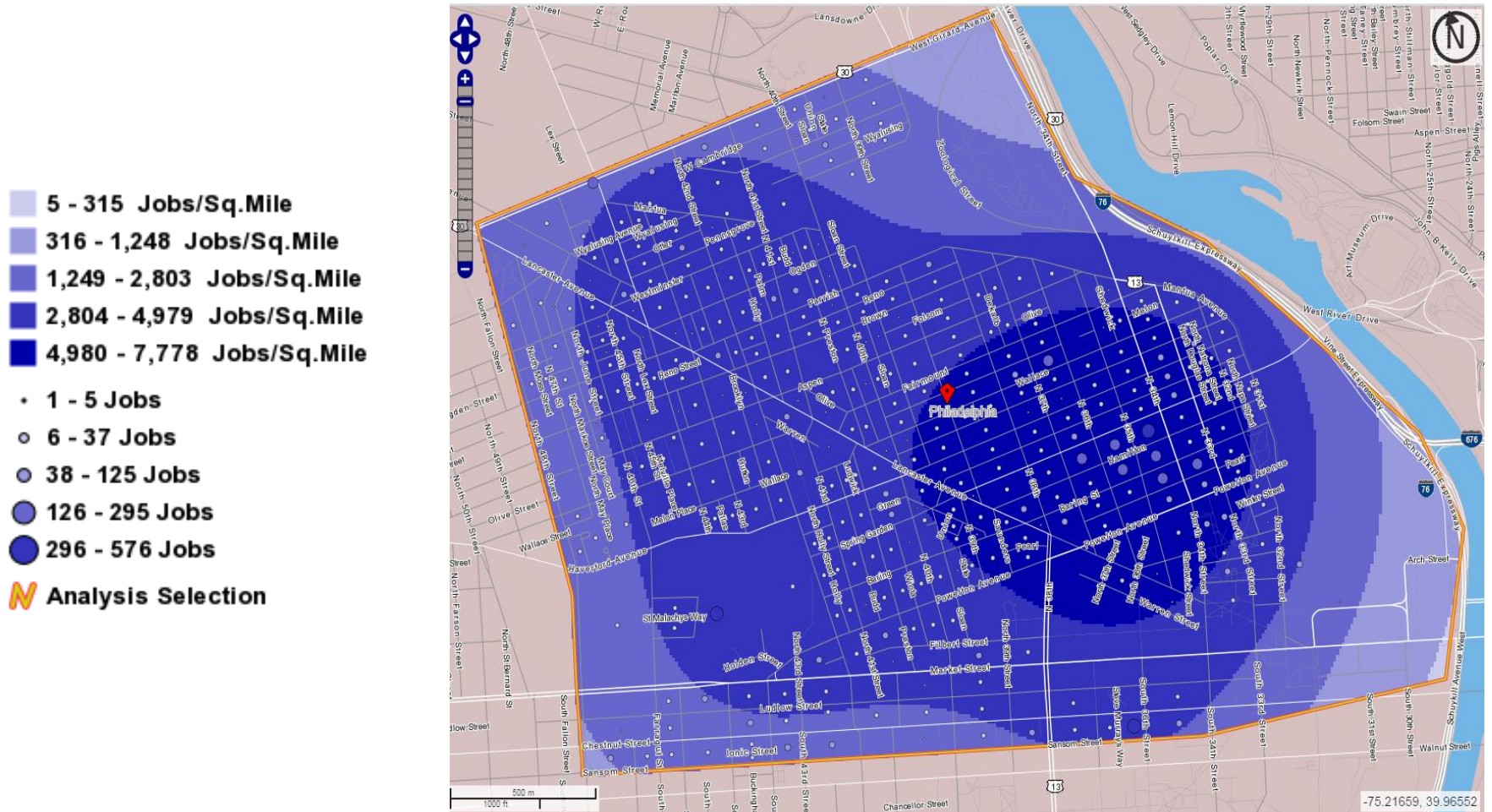
Cancel Go!

West Philadelphia: Work Area Profiles



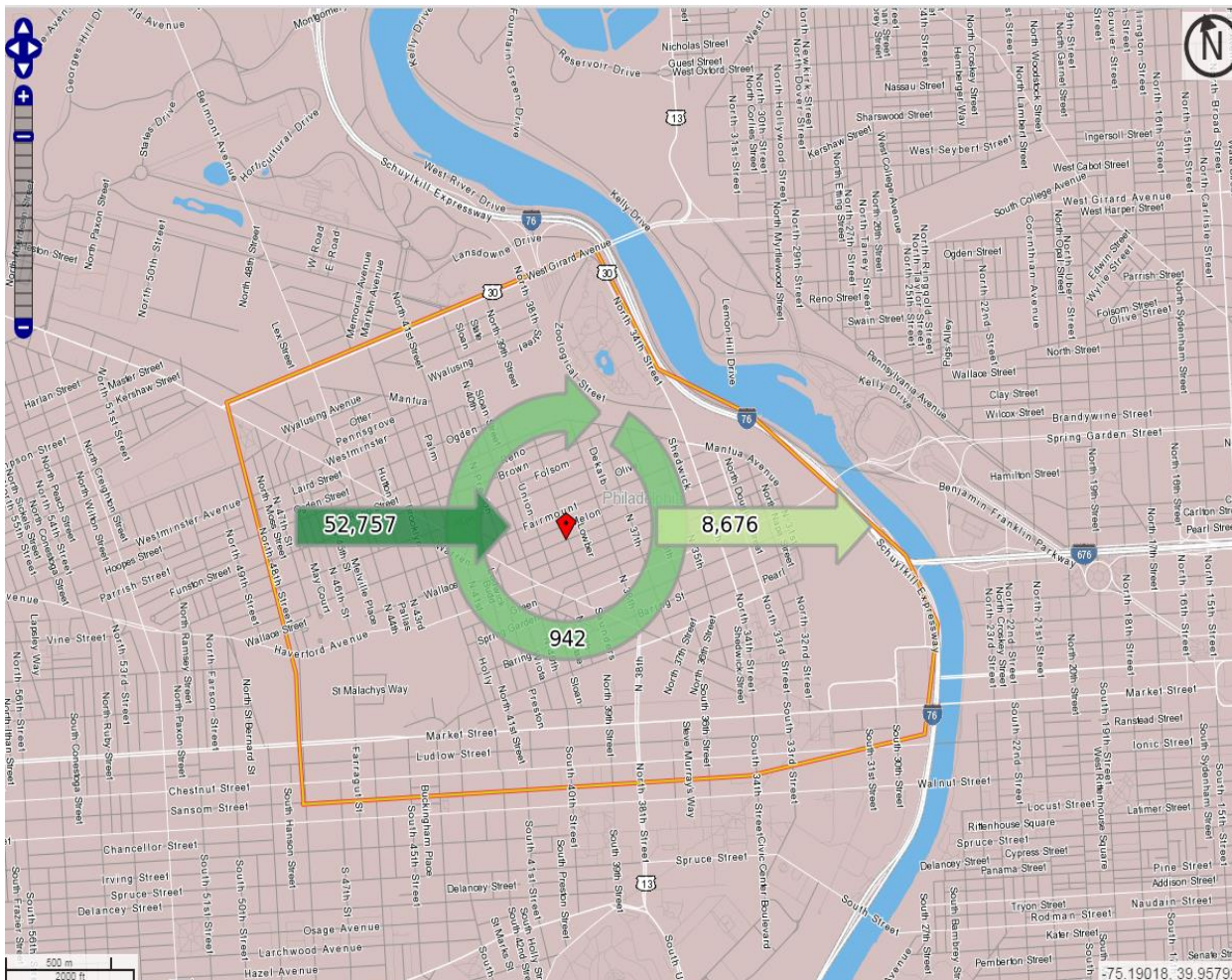
Source: LODES OnTheMap, 2011 Data

West Philadelphia: Home Area Profile

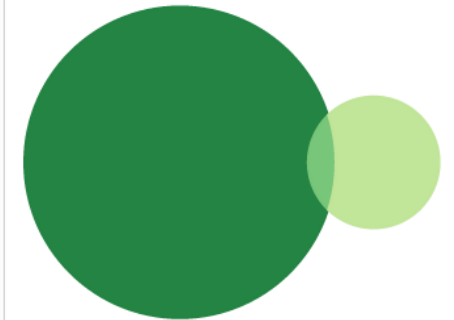


Source: LODS OnTheMap, 2011 Data

West Philadelphia: Inflow/Outflow



Inflow/Outflow Job Counts in 2011



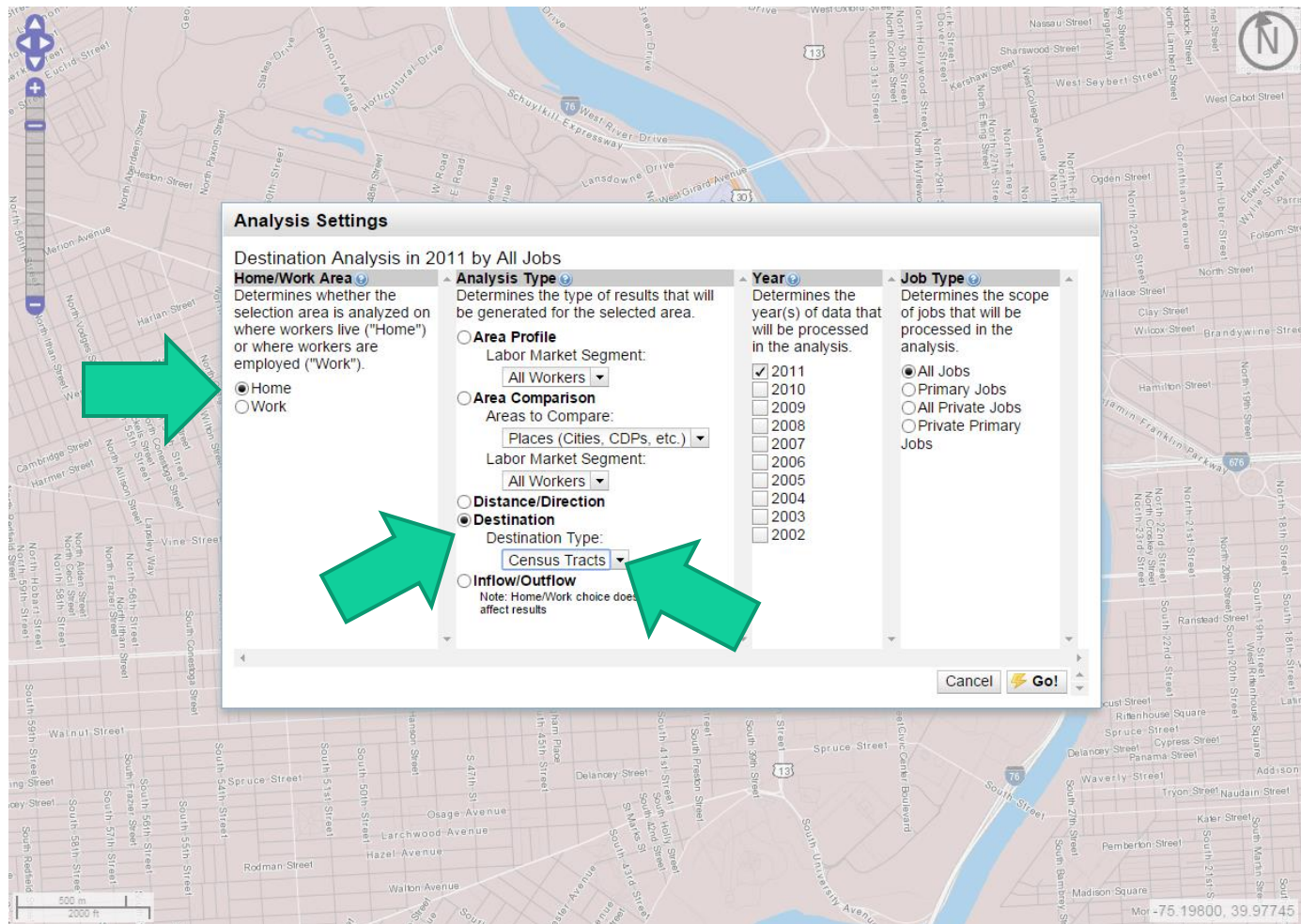
52,757 - Employed in Selection Area, Live Outside
8,676 - Live in Selection Area, Employed Outside
942 - Employed and Live in Selection Area

Note: Overlay arrows do not indicate directionality of worker flow between home and employment locations.

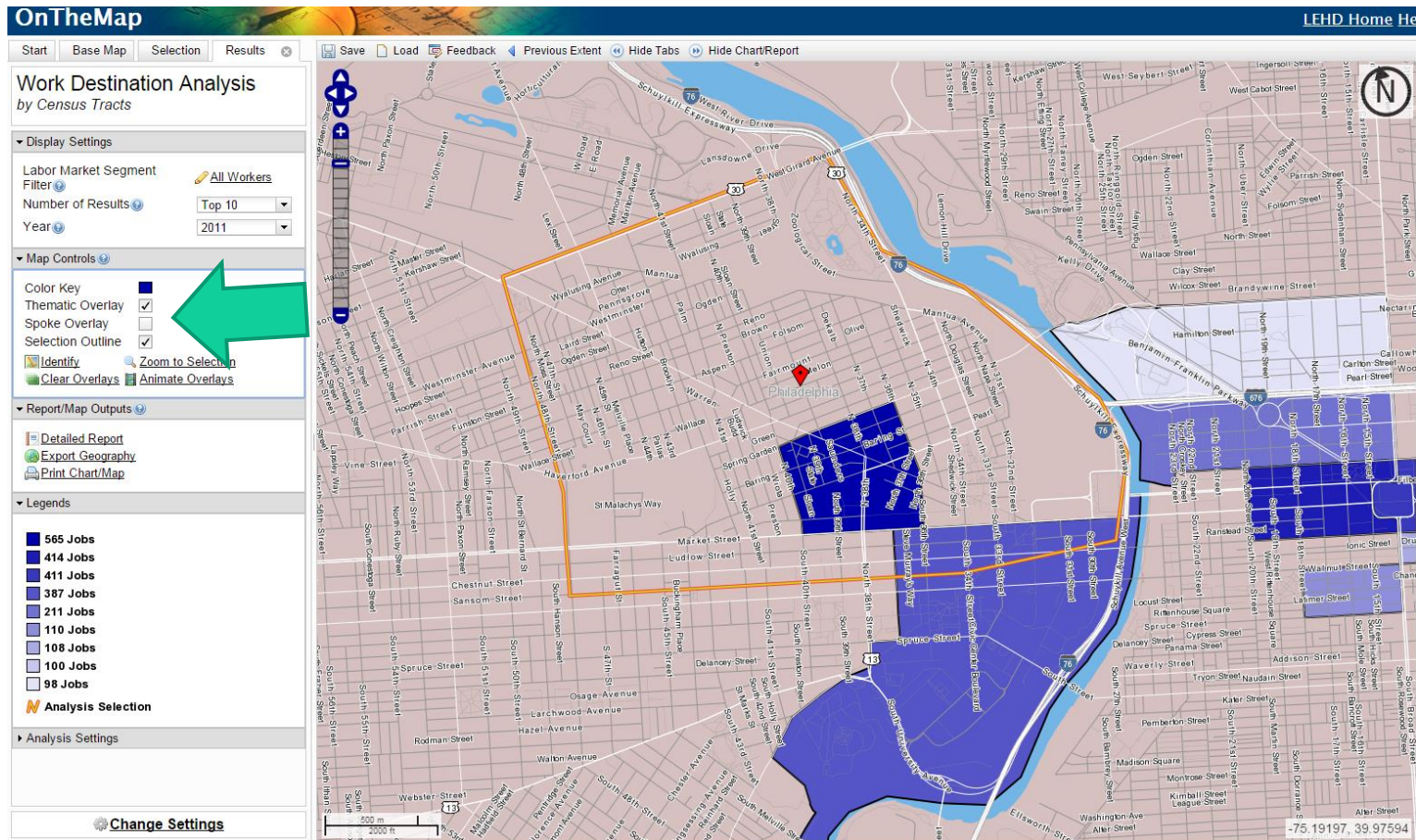
- ➔ Employed and Live in Selection Area
- ➔ Employed in Selection Area, Live Outside
- ➔ Live in Selection Area, Employed Outside

Analysis Selection

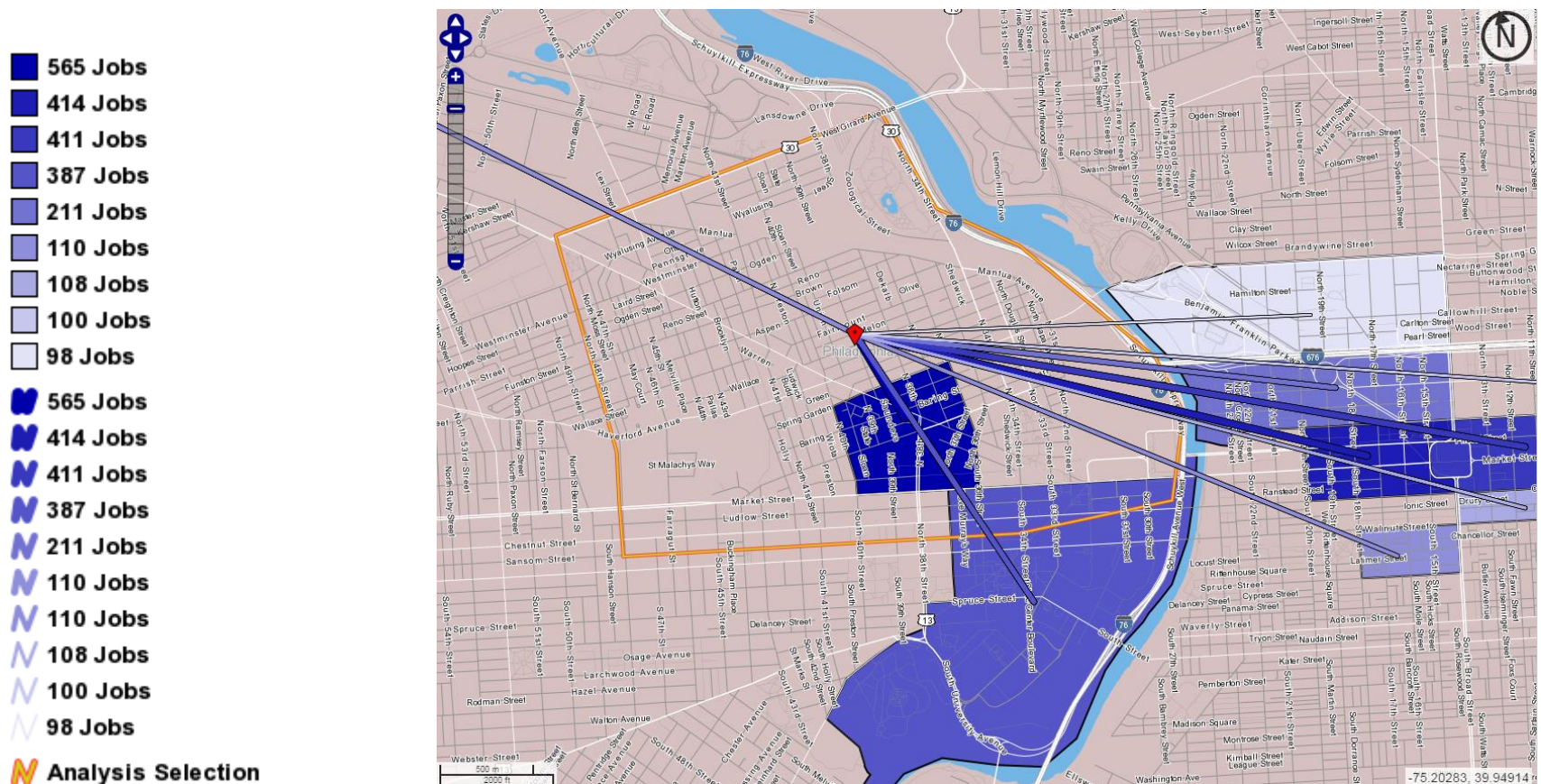
Destination Analysis



Destination Analysis with Spoke Overlay

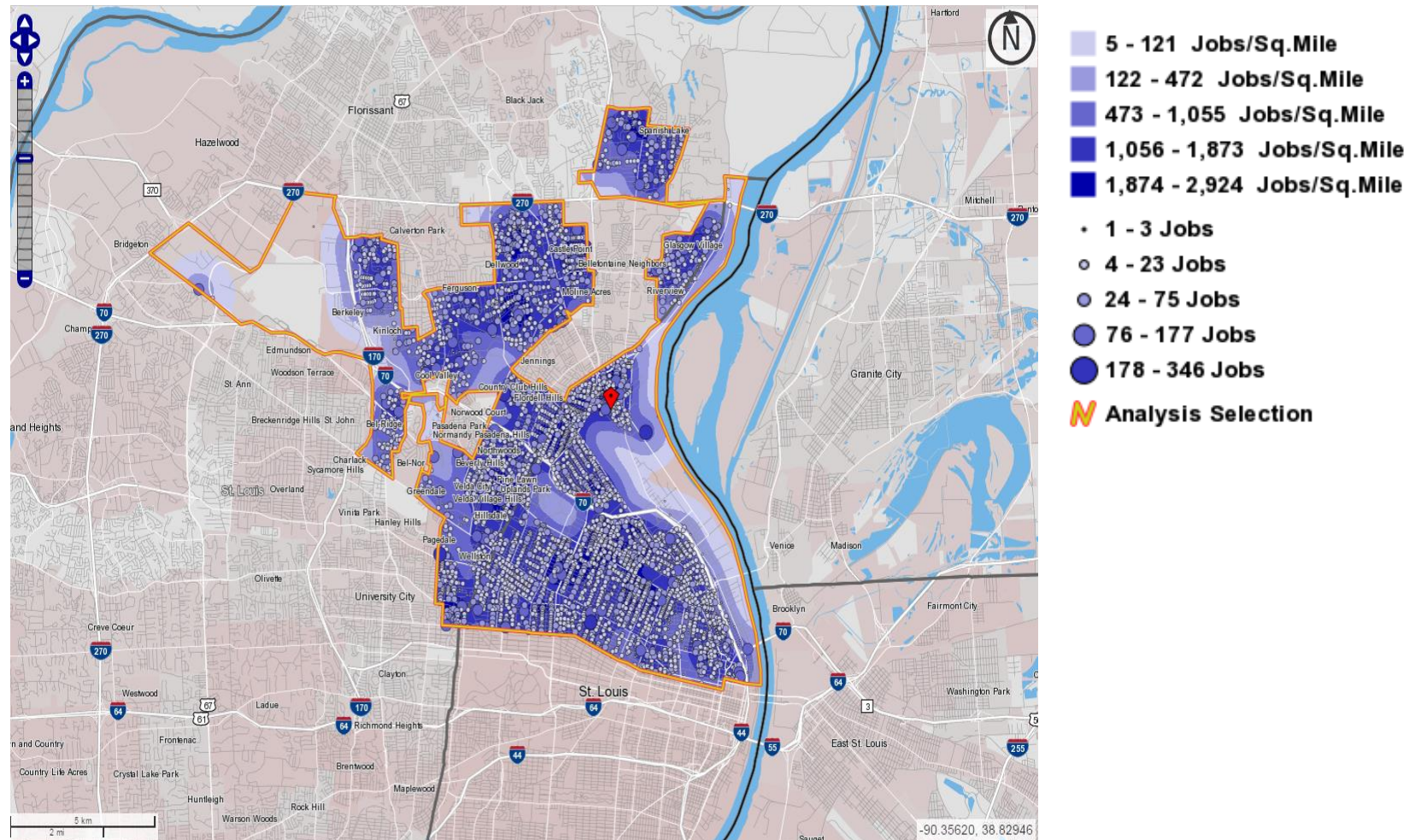


West Philadelphia: Destination with Spoke Overlay



Source: LODS OnTheMap, 2011 Data

St. Louis Home Area Profile - No buffer



Source: LODS OnTheMap, 2011 Data

Creating buffers

The screenshot displays the OnTheMap web application interface. The top navigation bar includes tabs for Start, Base Map, Selection, and Reports. The Selection tab is active, showing a Selection Preview of a red-outlined area and buttons for Confirm Selection, Confirm and Add Advanced Selection, and Add Advanced Selection. The Drawing Tools section includes Navigation, Draw Polygon (Freehand), Draw Line, Draw Point(s), Edit Drawn Shape, and Clear Selection. The Add Layer Selection section shows No Selected Layer. The Add Buffer to Selection section is expanded, showing three options: Do Not Buffer, Simple/Ring (selected), and Donut. The Simple/Ring option has a Radius of 0.75 miles. The Plume option has Start Radius and End Radius fields. The Import Geography section includes Import from KML, Import from SHP, and Import from GPS. The Previous Shapes section shows a Selection Area Shape from PromiseTargets.shp and buttons for Reuse Selection and Delete Selection. A large green arrow points from the left towards the Add Buffer to Selection section. Another green arrow points from the top left towards the Selection Preview. A third green arrow points from the top left towards the Selection tab. The map shows a city area with a purple buffer area around a red-outlined area. The map includes labels for various neighborhoods and landmarks, such as St. Louis, University City, and the Mississippi River. A scale bar at the bottom indicates 5 km and 2 miles. The footer contains the text Privacy Policy | 2 and Source: U.S.Census Bureau.

OnTheMap

Start Base Map Selection Reports Save Load Feedback Previous Extent Hide Tabs Hide Chart/Report

Selection Preview:

Confirm Selection

Confirm and Add Advanced Selection

Add Advanced Selection

Help?

Drawing Tools

Navigation

Draw Polygon (Freehand)

Draw Line

Draw Point(s)

Edit Drawn Shape

Clear Selection

Add Layer Selection

No Selected Layer

Add Buffer to Selection

Do Not Buffer

Simple/Ring

Radius: 0.75 miles

Donut

Inside Radius: miles

Outside Radius: miles

Plume

Start Radius: miles

End Radius: miles

Import Geography

Import from KML

Import from SHP

Import from GPS

Previous Shapes

Selection Area Shape from PromiseTargets.shp

Reuse Selection

Delete Selection

St. Louis

Privacy Policy | 2

Source: U.S.Census Bureau



SAVATZKY IN THE

OnTheMap for Community Engagement/Implementation Strategies

- OnTheMap provides a free and accessible tool for community data collection and analysis efforts
- Visualizations easy for non-technical audience to understand
- Local expertise informs maps and data reports produced
- Data informs workforce development, job training, and resident outreach strategies, and target areas for business growth
- OnTheMap Inflow/Outflow can track progress towards the goal of creating “a place where residents can live and work”

OnTheMap is a useful tool for Place-based Initiatives

- Comprehensive coverage
- Appropriate geography – Census block level
- Ability to create or load unique boundaries for analysis
- Free and publicly accessible
- Variety of outputs (PDF and Excel)

Common Questions from Sites

- Are students and unemployed adults included?
- Can we add layers?
- Can we visualize bus routes?
- Is it possible to break down inflow-outflow by demographic characteristics and area sub-geos?

Recommendations for LODES

- Combine with other data sources so that sites and analysts can add layers of their own data
- Add additional layers such as hospitals and transit routes (bus, metro)
- Breakdown of monthly income
 - Highest category begins at approximately \$40,000 (FPL family of 4 = approx. \$23,900)

Conclusions

- OnTheMap is a powerful analytic tool for place-based work that can help inform and guide community revitalization strategies
- Additional functionality to improve use of LODES
 - OTM layers usable in other mapping tools
 - Combine underlying data with other data sources
- Efforts should be made to introduce the tool to non-technical stakeholders and encourage the tool's use for communities and place-based work



Thank you!

Contact Information:

Drew Zachary (drew.a.zachary@hud.gov; drew.zachary@hhs.gov)

Margeaux Akazawa (margeaux.k.akazawa@hud.gov)

Calvin Johnson (calvin.c.johnson@hud.gov)

For more information, please visit: www.hud.gov/promisezones